

DRYFAST | PRACTICAL TIPS

HOW DO YOU SET UP THE FILTERBOX DUST SET?

Why use the filter box?

If a situation arises where dust extraction is required but there is no possibility or space to use a dust bag, it is possible to use the filter box. With the FB300 filter box and various filter combinations, we make this possible, with the major advantage that even the smallest dust particles can be filtered.

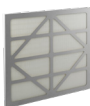
Thanks to the standard Ø300 mm suction and exhaust hose connections, this filter box can be combined in many different ways with fans and air transport hoses for positive pressure or negative pressure applications.



Suitable for which applications?



G4 filter



F9 filter



F7 filter



HEPA filter



Carbon filter



Paint mist filter

Application	Filters
For dust control in the construction and renovation market	G4 + F9 of F7
For renovation work in nursing homes and schools	G4 + F9 + HEPA
For odor control in the renovation market, construction and painting market, and industry	Carbon filter
For capturing paint mist and dust, for example during spray painting work on site	Paint mist filter

How should the filters be installed?

The direction of airflow is indicated by an arrow on both the filter box and the filters. To ensure that the filters work effectively, it is important that the arrows on the filters are placed in the correct direction and are visible in the box.



Complete set

**YOUR SUPPLIER
FOR MOBILE CLIMATE
CONTROL EQUIPMENT**

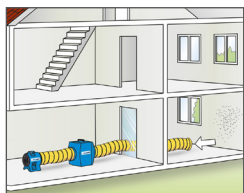


DRYFAST | PRACTICAL TIPS

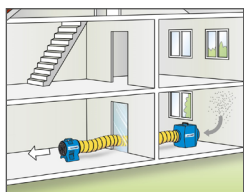
HOW DO YOU SET UP THE FILTERBOX DUST SET?

Possibilities in layout

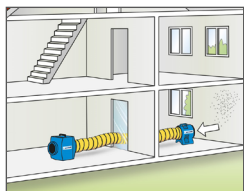
The filter box offers a range of installation options to meet different needs, including the choice between room extraction or spot extraction. In addition, the size of the workspace also determines the various installation options. Below are some examples of how you can install the filter box set in a home:



The most efficient setup for room and spot extraction, where the hose is located in the workspace and the filter box and fan are located outside the workspace. This setup can be used for dust and paint mist extraction, odor control, and air purification. An additional advantage is that this keeps the equipment clean, as the contaminated air is first filtered by the filter box.



Another setup for room extraction, where the filter box is located in the workspace and the contaminated air in this space is filtered. By placing the fan outside the workspace, you will experience a quieter working environment. This setup can be used for dust and paint mist extraction, odor control, and air purification.



Another option for room extraction, is to place the fan in the workspace and the filter box outside the workspace. This setup may be preferable if the filter box is too large to be placed directly in the workspace. This setup is suitable for dust extraction, odor control, and air purification.

Materials and cleaning

The robust plastic housing has three recesses on the inside where you can easily insert the filters. During use, the filter box will also become dirty, but it can be cleaned quickly and easily with water (high-pressure cleaner), ensuring that the box continues to work effectively. However, the filters cannot be cleaned (not even with compressed air); they must be replaced.

In addition to the easy cleaning of the filter box, you have the advantage that if the FB300 is connected to the suction side of the fan, the fan itself also remains clean.

Ordering options

Item no.	Contents
FB300	1 x filter box - 1 x connection hose 30 cm - 2 x hose clamps
DAF3000FB/5	1 x filter box - 1 x connection hose 30 cm - 2 x hose clamps 1 x DAF3000 fan - 1 x hose 5 meters - 1 x strap
DAF3000FB/10	1 x filter box - 1 x connection hose 30 cm - 2 x hose clamps 1 x DAF3000 fan - 1 x hose 10 meters - 1 x strap
Please note: the filters must be ordered separately. This depends on your application.	